



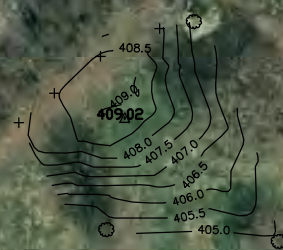
Washington, DC— Highpoint
Survey
1" = 100'
December 16, 2006

Datum: H: NAD83(CORS) —
MD SPC
V: NAVD88
(GEOID03)
Units: US Survey Feet
Local NGS Station —
AI7414 — HARN

Control Station 4 =
highpoint within 0.02'
surrounding topographic
area.

Position = 39° 57'
06.67097" N
77° 04'
33.99550" W
409.02'

Ortho
MD SPC = N 468057.41
E 1290688.81



Δ 401.51

