



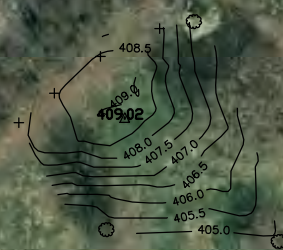
Washington, DC— Highpoint  
Survey  
1" = 100'  
December 16, 2006

Datum: H: NAD83(CORS) —  
MD SPC  
V: NAVD88  
(GEOID03)  
Units: US Survey Feet  
Local NGS Station —  
AI7414 — HARN

Control Station 4 =  
highpoint within 0.02'  
surrounding topographic  
area.

Position = 39° 57'  
06.67097" N  
77° 04'  
33.99550" W  
409.02'

Ortho  
MD SPC = N 468057.41  
E 1290688.81



Δ 401.51

