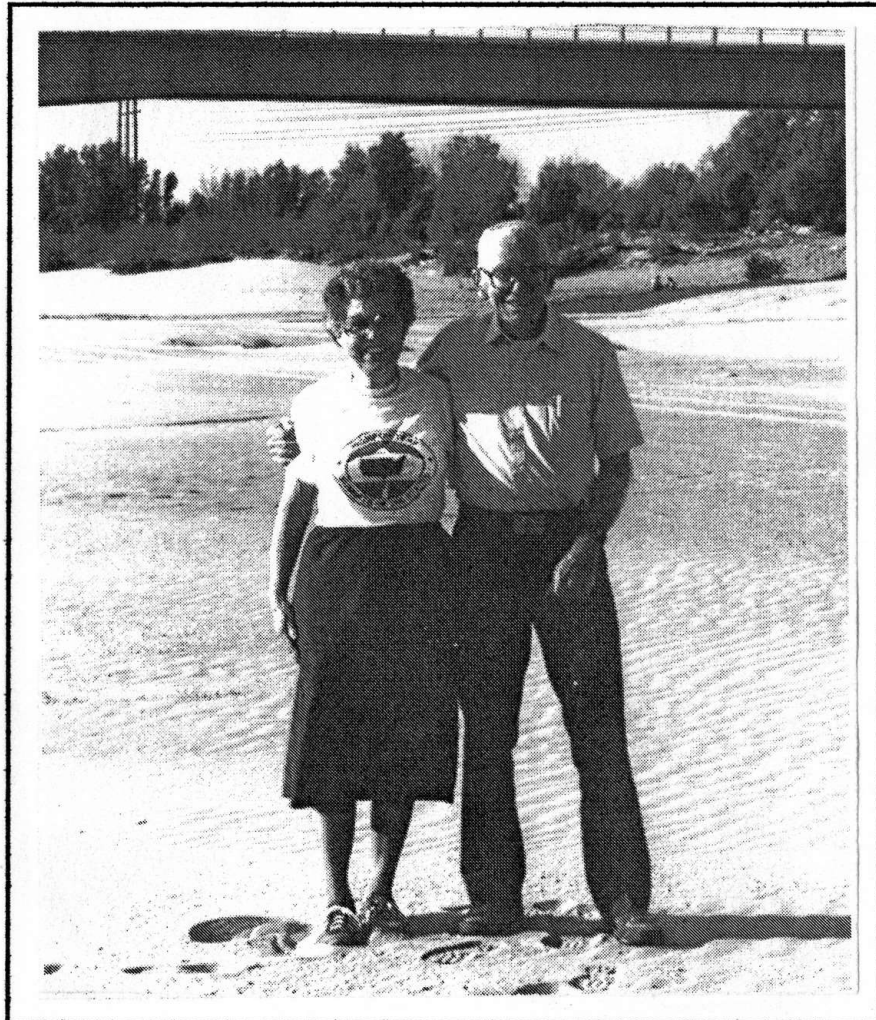
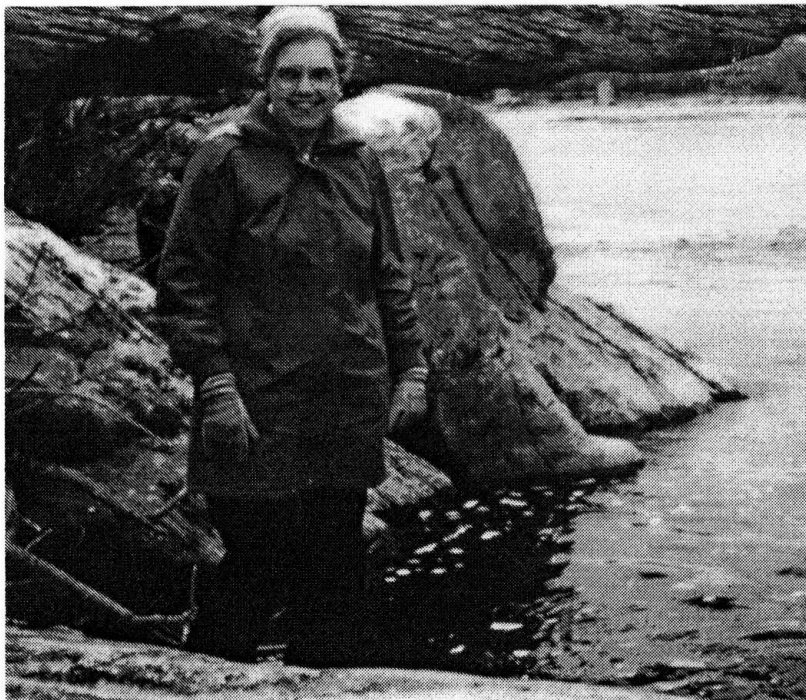


GUIDE TO THE LOWPOINTS
OF THE
UNITED STATES



BY
JACK PARSELL



UPPER: Joyce Parsell at the West Virginia low point. See p. 17.

LOWER: Jack Parsell at the District of Columbia low point. See p. 10.

FRONT COVER: Joyce and Jack Parsell at the Arizona low point in the waterless bed of the Colorado River. The bridge above their heads in the background is just over the border in Mexico. See p. 9

GUIDE TO THE LOWPOINTS
OF THE
UNITED STATES
BY
JACK PARSELL

THIRD EDITION, SEPTEMBER 2003

J. C. PARSELL
614 HAMLIN STREET
WATERTOWN, NY 13601
e-mail jparsell@twcny.rr.com

LOW POINTS OF THE UNITED STATES

STATE	LOWEST POINT	ELEV.
ALABAMA	GULF OF MEXICO	0'
ALASKA	NUNAVAKANUK LAKE	--4'
ARIZONA	COLORADO RIVER	70'
ARKANSAS	OUACHITA RIVER	55'
CALIFORNIA	DEATH VALLEY	--282'
COLORADO	ARIKAREE RIVER	3,315'
CONNECTICUT	LONG ISLAND SOUND	0'
DELAWARE	ATLANTIC OCEAN	0'
DISTRICT OF COLUMBIA	POTOMAC RIVER	1'
FLORIDA	ATLANTIC OCEAN	0'
GEORGIA	ATLANTIC OCEAN	0'
HAWAII	PACIFIC OCEAN	0'
IDAHO	SNAKE RIVER	710'
ILLINOIS	MISSISSIPPI RIVER	279'
INDIANA	OHIO RIVER	320'
IOWA	MISSISSIPPI RIVER	480'
KANSAS	VERDIGRIS RIVER	679'
KENTUCKY	MISSISSIPPI RIVER	257'
LOUISIANA	NEW ORLEANS	-8'
MAINE	ATLANTIC OCEAN	0'
MARYLAND	ATLANTIC OCEAN	0'
MASSACHUSETTS	ATLANTIC OCEAN	0'
MICHIGAN	LAKE ERIE	571'
MINNESOTA	LAKE SUPERIOR	600'
MISSISSIPPI	GULF OF MEXICO	0'
MISSOURI	ST. FRANCIS RIVER	230'
MONTANA	KOOTENAI RIVER	1,800'
NEBRASKA	MISSOURI RIVER	840'
NEVADA	COLORADO RIVER	479'
NEW HAMPSHIRE	ATLANTIC OCEAN	0'
NEW JERSEY	ATLANTIC OCEAN	0'
NEW MEXICO	RED BLUFF RESERVOIR	2,842'
NEW YORK	ATLANTIC OCEAN	0'
NORTH CAROLINA	ATLANTIC OCEAN	0'
NORTH DAKOTA	RED RIVER	750'
OHIO	OHIO RIVER	455'
OKLAHOMA	LITTLE RIVER	289'
OREGON	PACIFIC OCEAN	0'
PENNSYLVANIA	DELAWARE RIVER	0'
RHODE ISLAND	ATLANTIC OCEAN	0'
SOUTH CAROLINA	ATLANTIC OCEAN	0'
SOUTH DAKOTA	BIG STONE LAKE	966'
TENNESSEE	MISSISSIPPI RIVER	178'
TEXAS	GULF OF MEXICO	0'
UTAH	BEAVER DAM WASH	2,180'
VERMONT	LAKE CHAMPLAIN	95'
VIRGINIA	ATLANTIC OCEAN	0'
WASHINGTON	PACIFIC OCEAN	0'
WEST VIRGINIA	POTOMAC RIVER	240'
WISCONSIN	LAKE MICHIGAN	579'
WYOMING	BELLE FOURCHE RIVER	3,099'

PREFACE

After reaching the highest point in each of the fifty US states, a natural follow-up was to visit all of the state low points. This was accomplished mostly during the years 1988 through 1991. Visits to beaches in some of the coastal states occurred at earlier times, as much as forty years ago. Clark Hall of Buffalo, NY accompanied me to most of the interior low points, and my wife Joyce was also along on many of the low point expeditions.

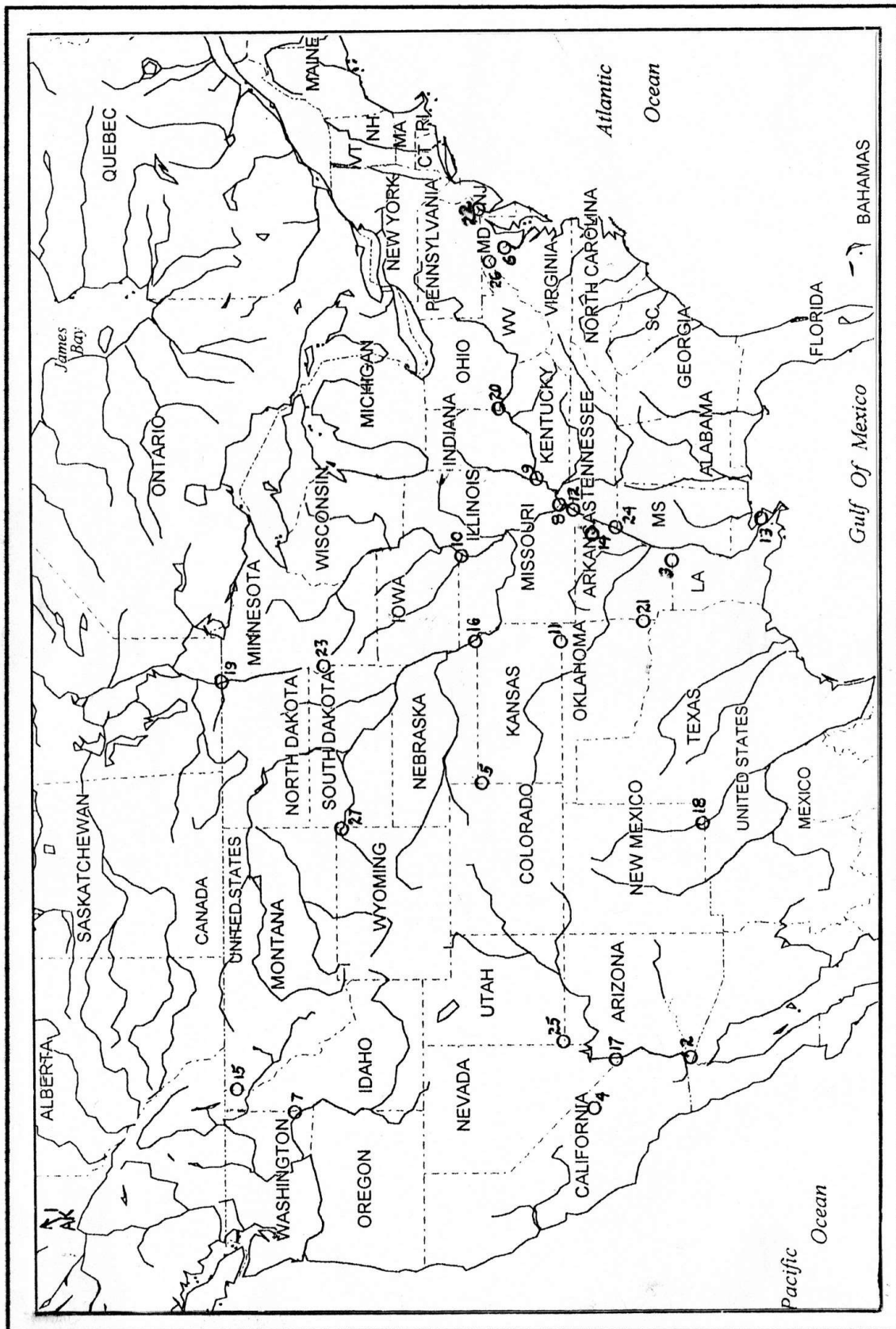
This guide book provides directions and hints for getting to the interior low points. Opposite this page is a listing of the 51 low points (including DC). Of this total, 24 are currently considered coastal (but see next paragraph), being at sea level for states bordering the Atlantic, Pacific and Gulf of Mexico, or lake levels for some of the interior states. These 24 are also listed separately on page 19. Access to any of these low points is simply a matter of going to the beach or shore of your choice and dipping your foot in the water.

This Sept. 2003 3rd Edition includes the new low point for Colorado and a corrected elevation for Utah. These changes have been accepted by USGS and the CO elevation has been corrected in their web site. A spot has been found in extreme SE Texas that is about 1 ft. below sea level. Another area near Everett, WA has been found on topo maps to be -3 ft. These will be investigated further and results reported in future editions. Other changes in this 3rd Edition are corrections for the low points in DC, KS, MT, ND, OH, TN and WV.

Alaska, California and Louisiana have locations below sea level, so their coastal beaches do not count as low points. Note that the -4ft. level for Alaska has not been verified by USGS, so any sea level visit is still acceptable. As mentioned above, possible new low points for Texas and Washington may remove their coastal low point status. The interior state low points are usually located on river banks or lakes where the state line reaches or crosses the water. Two of the states, New Mexico and South Dakota have low points which used to be on rivers, but now are on lakes because of dams downstream in the next state. Because of their unique nature these two are included with the interior states and directions for access are given. The map and list on pages 6 and 7 show the locations of each of the interior low points. Keyed to each low point in the listing is the page number for access directions and other information about that location.

Precise locations are often difficult to determine. In many instances state line fences stop at the edge of the river flood plain, and a compass and/or GPS must be followed for the remaining distance to the water. As contrasted with mountain summits which are usually on public land, many of the interior low points are on privately owned property. In some instances it is difficult to determine the ownership and to obtain permission to go on the property. Information in this regard is given in the directions for several of the low points. Finally, another factor of concern is river water level. Many of the low points are situated on flood plains which during periods of high water are inundated and inaccessible. It is best to go to many of these locations during low water periods. See cover picture for an example of extreme low water.

INTERIOR LOW POINTS IN THE U. S.



U. S. INTERIOR LOW POINT

<u>MAP NO.</u>	<u>STATE</u>	<u>LOWEST POINT</u>	<u>TEXT PAGE NO.</u>
1	ALASKA	NUNAVAKANUK LAKE	8
2	ARIZONA	COLORADO RIVER	9
3	ARKANSAS	OUACHITA RIVER	9
4	CALIFORNIA	DEATH VALLEY	9
5	COLORADO	ARIKAREE RIVER	10
6	DIST. OF COL.	POTOMAC RIVER	10
7	IDAHO	SNAKE RIVER	10
8	ILLINOIS	MISSISSIPPI RIVER	11
9	INDIANA	OHIO RIVER	11
10	IOWA	MISSISSIPPI RIVER	11
11	KANSAS	VERDIGRIS RIVER	12
12	KENTUCKY	MISSISSIPPI RIVER	12
13	LOUISIANA	NEW ORLEANS	12
14	MISSOURI	ST. FRANCIS RIVER	13
15	MONTANA	KOOTENAI RIVER	13
16	NEBRASKA	MISSOURI RIVER	13
17	NEVADA	COLORADO RIVER	14
18	NEW MEXICO	RED BLUFF RESERVOIR	14
19	N. DAKOTA	RED RIVER	15
20	OHIO	OHIO RIVER	15
21	OKLAHOMA	LITTLE RIVER	15
22	PENNSYLVANIA	DELAWARE RIVER	16
23	S. DAKOTA	BIG STONE LAKE	16
24	TENNESSEE	MISSISSIPPI RIVER	16
25	UTAH	BEAVER DAM WASH	17
26	W. VIRGINIA	POTOMAC RIVER	17
27	WYOMING	BELLE FOURCHE RIVER	18

NO. 1 ALASKA

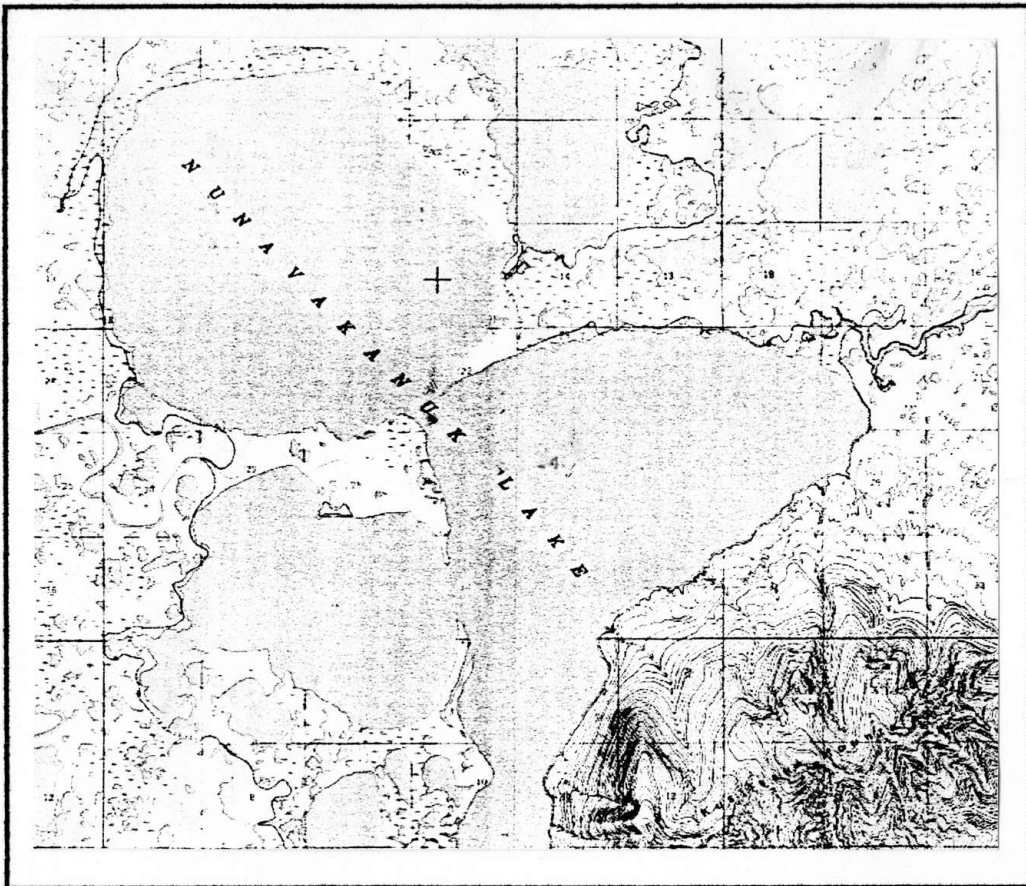
LOCATION: NUNAVAKANUK LAKE

ELEVATION: -- 4 FEET

ACCESS: This interesting area is located 30 miles W of Mountain Village, AK, an incorporated village with a landing strip and a seaplane anchorage on the N bank of the Yukon River. I thought I had been to all of the State low points until Alaskan Steve Gruhn e-mailed me in July, 2000 about a large lake in the Yukon R. delta that is below sea level. With a surface area of about 29 sq. miles Nunavakanuk sits in a below sea level depression covering about 60 sq. miles. There are many other smaller lakes within the depression, and it appears that lakes and swampy areas cover about 90% of the 60 sq. mile area. Also, within 5 or 6 miles N of the big depression, there are at least eight other very small, below sea level potholes. These are shown clearly on the Kwiguk A-6 topo map, with sea level lines surrounding each of them. It appears that the big lake is the lowest point at -- 4 feet. USGS has acknowledged existence of this site but will not formally designate it as official until further surveys are conducted.

It appears that in summer the only feasible access to the lake would be by seaplane. However the terrain is not all soggy. At the SE end of the lake is a significant highlands, the Kusilvak Mountains, with a top elevation of about 2430 feet, rising out of Nunavakanuk Lake in a distance of only a little over 2 miles. Coordinates for the Lake are N 62.059°, W 164.668°. Mountain Village is at N 62.086°, W 163.729°.

Until USGS formally approves this as the Alaska low point, a visit to any sealevel coastal beach is acceptable.



NO. 2 ARIZONA

LOCATION: COLORADO RIVER

ELEVATION: 70 FEET

ACCESS: The low point is at the Mexican border. You should check with the Customs Office and Border Patrol so that they won't think you are wetbacks trying to sneak across the border.

From San Luis, AZ follow farm roads W to an irrigation channel that runs very close to, and parallel with, the river. Walk across the irrigation channel bridge which is a little N of the border. Follow the river bank S to where the border line fence reaches the river. When we were there in Nov. 1990 there was no water in the river. All of the remaining Colorado water was flowing in the irrigation channel into Mexico. We could walk out to the center of the sandy river bottom to what we estimated was the boundary line. See picture on front cover.

NO. 3 ARKANSAS

LOCATION: OUACHITA RIVER

ELEVATION: 55 FEET

ACCESS: Take rte 82 W from Crossett, AR. Cross the Ouachita River and continue W through Felsenthal National Wildlife Refuge. Beyond the refuge take a gravel road S. At the first stop sign turn L and proceed to Huttig. Continue toward Felsenthal Lock and Dam but bear off to the R rather than going L up to the dam. Continue along the river for about 4 miles to a clearing near a river gauging station.

The road goes on from the clearing as a 4WD path near the river to the LA line. We walked from the clearing the remaining 1.7 miles to the LA line along the river bank. The pronunciation of Ouachita sounds almost like Wichita.

NO. 4 CALIFORNIA

LOCATION: DEATH VALLEY

ELEVATION: - 282 FEET

ACCESS: According to the U.S. Geological Survey, Badwater at - 279.8' is not the low point. There are two locations out on the salt flats which have been measured at -282'. One is about four miles NW of Badwater. The other is only 1/2 mile SW of the junction where the Natural Bridge road branches off from rte. 178. This junction is 3.5 miles N of Badwater. We opted for this nearer one. Just walk out on the salt flats for about 1/2 mile and you will find a series of salt water pools in a depressed area about 1/4 mile long by 1/8 mile wide. There are no markers so you have to estimate which is the lowest pool.

NO. 5 COLORADO

LOCATION: ARIKAREE RIVER

ELEVATION: 3315 FEET

ACCESS: Until May 2000 USGS accepted the Arkansas R where it exits CO into KS as the lowest point in CO. However, Fred Anderson, Adam Roddy, and others in CO, found two lower spots, the lowest being where the Arikaree R passes from CO into KS. Based on contour lines on the 7.5' USGS topo map, the elevation is a little lower than 3320'. I wrote to USGS and received a reply in which they agreed on May 24, 2000 that the Arikaree R. at the CO-KS line is the low point. This low point at approx. 3315± ft. is the highest State low point.

From the center of Haigler, NE, drive W on US 34 0.7 mi. and just after the bridge over Sullivan Draw go straight W. Again straight at an intersection 2.6 mi. farther W. Follow the road W and S going thru the NW corner of KS and on to the CO line. Park near the sign "Entering Yuma County". This is about 6.8 mi. from US 34. On foot, go roughly S in a depression between two fields toward the river. Cross a barbed wire fence running E-W. Continue to the river, then go W (right) a short distance to where an old fence comes toward the river at an angle. Where the fence intersects the river should be the low point.

NO. 6 DISTRICT OF COLUMBIA

LOCATION: POTOMAC RIVER

ELEVATION: 1 FOOT

ACCESS: The lowest point is on the VA side of the river at the DC-VA-MD tri-point near Jones Point. From exit 1 off I 95, just W of the Woodrow Wilson bridge, go N into Alexandria, VA on US 1 a short distance. Turn R on Franklin St. and go several blocks to another R on S. Lee St. Follow around under the Woodrow Wilson bridge and park in the Jones Park parking area. From there a short walk will bring you to the river. A little N of the end of the point you will find a survey marker inscribed DC-VA BOUNDARY 1947. Walk down to the water's edge from there. The DC-VA boundary follows the pierhead line from the extension of 2nd St. in Alexandria, VA south to the tripoint. The true low point is a few yards off shore from the survey marker, in line with the bridge pier to the north, but the water level is the same. See picture inside front cover. Note: During 2003 and possibly 2004, new bridge construction may require a different route to get to Jones Park.

NO. 7 IDAHO

LOCATION: SNAKE RIVER

ELEVATION: 710 FEET

ACCESS: In Idaho go W on US 95 and get off at the interchange for rte. 128. Then go W on rte. 128 to the WA border. Walk S across the RR track and down to the water. This is where the Clearwater River empties into the Snake and is the point farthest downstream in Idaho.

NO. 8 ILLINOIS

LOCATION: OHIO AND MISSISSIPPI RIVERS

ELEVATION: 279 FEET

ACCESS: From Cairo, IL drive S to Fort Defiance State Park. At the far S tip of the park, where the Ohio River joins the Mississippi is the lowest point in Illinois. Out in the middle of the rivers at their confluence is the tri-state junction of Illinois, Kentucky and Missouri.

NO. 9 INDIANA

LOCATION: WABASH AND OHIO RIVERS

ELEVATION: 320 FEET

ACCESS: From a little W of Mt. Vernon, IN go S on rte 69 for 8 miles to Hovey Lake State Game Preserve. Then go W 1.2 miles on the paved road and keep on W 1.1 miles on a gravel road (paved road goes S to Uniontown Lock and Dam). Then turn left (S) for 0.4 mile, then right (W) opposite a Mobil tank farm. Go on W about 2½ miles depending on the condition of the road which becomes a farm lane and eventually a trail. Hike the last 1/10 mile trail to the confluence of the Wabash and Ohio Rivers. At low water, the almost vertical bank makes it difficult to get to the edge of the water.

Out in the middle of the rivers at this point is the tri-state corner of Illinois, Indiana and Kentucky.

NO. 10 IOWA

LOCATION: DES MOINES AND MISSISSIPPI RIVERS

ELEVATION: 480 FEET

ACCESS: The low point is where the Des Moines River enters the Mississippi, just south of Keokuk. Coming from the W on US 61 go across the Des Moines River bridge into Iowa. A short distance beyond the bridge there is a posted road to the right (S) that goes about 1 mile down to the river bank at the confluence of the rivers. We did not get permission to go in, but it would be advisable to do so.

At this location there is also a tri-state corner of IA - IL - MO in the middle of the confluence of the two rivers.

NO. 11 KANSAS

LOCATION: VERDIGRIS RIVER

ELEVATION: 679 FEET

ACCESS: When Clark Hall and I were there in 1988 a bridge over the Verdigris River a little N of the OK line was being rebuilt and was closed. So, we went in from the W side of the river via farm lanes and across fields, a very confusing route. A better way is on the E side of the river. From Coffeerville go S on US 169 to the edge of the city and turn E on County 1400 RD just before reaching a bridge on rte. 169, which is about 1½ miles N of the OK line. Continue E on this side road to the Verdigris R. bridge. Then go about 0.1 mi. to the second house on the right with mail box marked Stephen White. Be sure to ask permission to go on the property. From the house walk S about ½ mile through a pasture and trees and crossing a small stream which may be dry. When you reach the KS-OK state line fence, follow it W to the edge of the river. Coordinates for the Low Point are: 36° 59' 57" N, 95° 35' 20" W.

NO. 12 KENTUCKY

LOCATION: MISSISSIPPI RIVER

ELEVATION: 257 FEET

ACCESS: The low point in Kentucky is on the far W side of the state in a section isolated from the rest of the state by a loop in the Mississippi River. Access is from the S in Tennessee. From Tiptonville, TN go N on route 22. At the 9 mile marker continue straight N on an unpaved road (rte 22 turns E). This gravel and dirt road becomes a farm lane along the edge of woods on the left. At 2 miles from the corner of rte 22 turn L along the edge of woods and go about another mile along the woods, through the woods, and along the river bank to a relatively clear area opposite a power plant on the Missouri side of the river. Walk down to the river and follow the bank S, downstream along the edge of the water to the KY-TN line where concrete rip-rap and stones cover the bank. This was easy for us because the river was very low at that time. It would probably be impossible with high water

NO. 13 LOUISIANA

LOCATION: PONTCHARTRAIN PARK, NEW ORLEANS

ELEVATION: - 8 FEET

ACCESS: It is not unusual to find a below sea level location in desert country such as Death Valley in California, but in Louisiana which has plentiful rainfall, how can there be land below sea level that is not covered with water? The answer is in the dike system along the Mississippi River. Without the annual flooding and deposition of silt, the delta land is gradually sinking. The only way to keep the river out is with dikes and pumps.

Pontchartrain Park is a golf course containing a group of connected ponds which are the low point. Access is from exit 238 from I 10 in New Orleans. This is just W of the Inner Harbor Navigation Canal. Once off the Interstate find Gentilly Blvd. and drive N from Gentilly on Press Drive to the park.

NO. 14 MISSOURI

LOCATION: ST. FRANCIS RIVER

ELEVATION: 230 FEET

ACCESS: From Kennett, MO drive SW on US 412. Just before reaching a bridge over the St. Francis River into Arkansas, turn S on route AC which after 1½ miles becomes route F. Continue on route F to the MO-AR border. Turn W and follow the border. After a short distance this road turns S and crosses into Arkansas. Don't turn S. Continue W along the border on a dirt road and lane over two drainage canals and finally to a parking area beside the St. Francis River at the Missouri low point.

NO. 15 MONTANA

LOCATION: KOOTENAI RIVER

ELEVATION: 1800 FEET

ACCESS: Drive NW from Troy, MT on rte. 2 for about 12 miles. Look for a poor dirt road on left (west) which leads steeply down to the abandoned townsite of Leonia. Approx. coordinates for the intersection of Rt. 2 and Leonia Rd. are: 48° 36' 40"N, 116° 01' 30"W. The ID-MT line angles across the Kootenai River and touches the right bank about 1500 ft. downstream (north) from where the old bridge went over the river. The bridge is now gone (2003). Park near where the bridge was and hike downstream (north) about 1500 ft. along the rather steep river bank to the low point. Coordinates at the low point are: 48° 37' 15"N, 116° 02' 54"W.

When I was there in 1988 we thought the low point was upstream from the bridge and access was easier on the west side of the river. At that time you could walk across the bridge for access to the west side. Newer map research shows that the lowest point in MT is downstream as described above.

NO. 16 NEBRASKA

LOCATION: MISSOURI RIVER

ELEVATION: 840 FEET

ACCESS: From Falls City, Nebraska go E 9 miles on route 159 to Rulo. Turn S on a blacktop road and after 1½ miles turn left (E) at a T junction. This is route 7 which follows the river. After 5 miles the KS line is reached. There is an elevated dike-like road heading E along the NE-KS line blocked by a gate. To the left of the gate a large sign commemorates the establishment of the base line of the 6th Principal Meridian on the 40th parallel. A cast iron marker is located up on the hillside to the west.

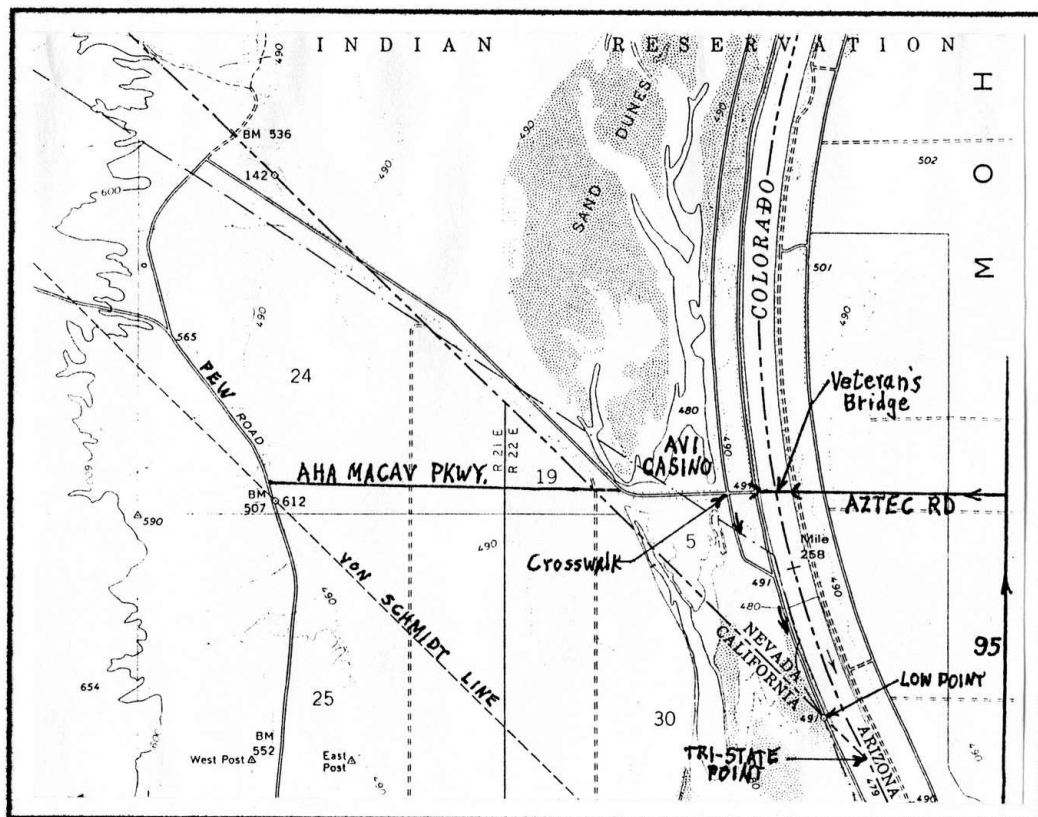
To reach the low point walk E along the dike-like lane until it turns N. Continue E for the remaining distance (approx. 50 yards) to the edge of the river.

NO. 17 NEVADA

LOCATION: COLORADO RIVER

ELEVATION: 479 FEET

ACCESS: From I 40 in Needles, CA cross the river into AZ and go N 9.3 mi. from the Needles Bridge on AZ rte 95 to Aztec Rd. Go W 2.8 mi on Aztec across Veteran's Bridge to the first crossroad W of the river. Turn S (left) on gravel road that runs parallel to the river. Travel S a few hundred yds to the State line markers. A little farther S is an easy access to the river giving access to the low-point. An alternate route is N from Needles via Pew Rd in CA for about 12 mi, then turn E (right) on Aha Macav Parkway for 1.5 mi. Continue E on Aztec Rd to the crossroad mentioned above. The AVI Casino is on the N side of Aztec Rd. See map below.



NO. 18 NEW MEXICO

LOCATION: RED BLUFF RESERVOIR

ELEVATION: 2842 FEET

ACCESS: From either N or S on US 285 drive to the NM-TX line. Turn E on a dirt road just on the NM side of the border. Follow this road 3 miles almost to Red Bluff Reservoir. When the road turns to the N to go down to the water, stop and walk on E to the state line marker on the bank of the reservoir. Note that this low point is on the shore of a lake created in the Pecos River by the construction of a dam downstream in Texas. Before the dam was built the low point elevation on the Pecos River at the NM-TX line was 2840 feet.

NO. 19 NORTH DAKOTA

LOCATION: RED RIVER

ELEVATION: 750 FEET

ACCESS: This low point is on the W shore of the river at the Canadian border. Drive to Pembina, ND. Stop at the US Customs office to let them know what you plan to do. Also, advise the Border Patrol about your proposed itinerary. From route 59 in Pembina turn N on a road just before 59 crosses the Red River into MN. Follow this road which parallels the river for about 2 miles until you reach a barricade across the road at the International border. There is an International boundary marker just beyond the end of the road. Walk due E along a cleared boundary line strip between farm fields in North Dakota and Manitoba. This leads into a woods and across two ravines before reaching the river. We found no marker at or near the river, so you have to estimate it based on compass and/or GPS course followed. Coordinates at the low point are: 49° 00' 00" N, 97° 13' 48" W.

NO. 20 OHIO

LOCATION: GREAT MIAMI AND OHIO RIVERS

ELEVATION: 455 FEET

ACCESS: In the extreme SW corner of OH leave US 50 at North Bend, OH which is just S of Cleves. Take Brower Rd. W along the Ohio River and continue to the main gate at the power plant on the Ohio River. When I was there in 1988 the then Cincinnati Gas & Electric Co. allowed access to the low point which is just downstream from the power plant where the Great Miami River enters the Ohio River. Note that the present owner of the power plant may not allow you on the property to walk to the low point. The only reasonable alternative is by water, but I have no information on where a boat or canoe could be launched.

Also, at this location. out in the waters of the rivers is the tri-state corner of Indiana, Kentucky and Ohio.

NO. 21 OKLAHOMA

LOCATION: LITTLE RIVER

ELEVATION: 289 FEET

ACCESS: From Cerrogordo, OK drive N on a lane on the OK side of the OK-AR line. Where the lane turns left (W) park and continue N on a compass bearing to the water. This is about 200 yards distance and includes crossing a small tributary to reach a gravel bar at the bank of the river.

NO. 22 PENNSYLVANIA

LOCATION: DELAWARE RIVER

ELEVATION: SEA LEVEL

ACCESS: At the PA - DE line the Delaware River is tidal, but in order to be at the lowest point in PA, I feel you need to get as close to the Delaware line as possible. Fortunately there is a small park in Marcus Hook, PA which is not far from the DE line. From Claymont, DE go N on route 13 into PA. After crossing into PA take the first possible street right (E) in Marcus Hook, just past an oil refinery. Go as far E as possible, then turn left (N). The park, on the river, will be on your right.

NO. 23 SOUTH DAKOTA

LOCATION: BIG STONE LAKE

ELEVATION: 966 FEET

ACCESS: This is a low point like New Mexico on what originally was a river but now is a lake due to a downstream dam. Both the dam and the Minnesota River below the dam are in Minnesota, so the SD lowpoint is on the shore of the lake. From Big Stone City, SD drive N from town on Lake Street to a beach near the S end of Big Stone Lake.

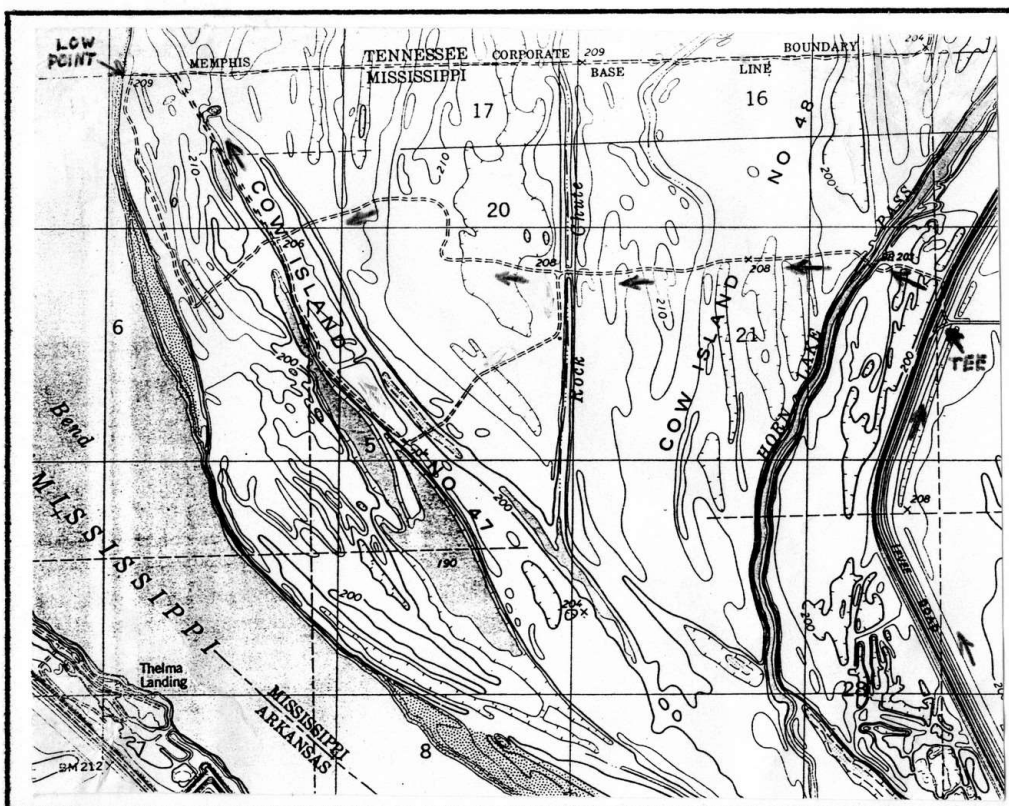
NO. 24 TENNESSEE

LOCATION: MISSISSIPPI RIVER

ELEVATION: 178 FEET

ACCESS: We made 3 visits to this area before we finally found a way to the TN low point. The Horseshoe Lake and Lake Cormorant 7½' quad maps are of help here. One route is from Walls, MS which is 3 mi. S of the TN-MS line on US 61. This is a confusing mix of farm and levee roads, so an easier way is via Lake Cormorant. From the TN-MS line go 7.3 miles S on US 61, then turn W for 1 mi. to Lake Cormorant. Continue over the RR track and on W for 1.4 mi. to the levee road along the river. Go N on the levee road 5.8 miles to a tee where a road comes in from the E. Just N of the tee, look for a road off the W side of the levee that goes down to a gate. Ordinarily the gate is locked. You will have to try to contact the caretaker at the camp on Rock Chute (see map). The best route to the low point is shown on the map leading to where the MS - TN boundary reaches the river. This is the TN low point, and out in the middle of the river is the tri-state corner AR - MS - TN.

The map on page 17 should be helpful for this difficult to find location.



Map of access to the Tennessee Low Point

NO. 25 UTAH

LOCATION: BEAVER DAM WASH

ELEVATION: 2180 FEET

ACCESS: Leave I 15 at Littlefield, AZ and go N thru Beaver Dam on the road to Shiwits, UT. At 6½ mi. N of Beaver Dam pass under a power line. ¾ mi. past the power line is the UT line. After another ¾ mi. from the state line take an extreme left (SW) turnoff on a dirt road going back into AZ and down into Beaver Dam Wash. Park just before reaching the wash which may be dry.

Walk up the wash a little W of N for about 2 mi. to the UT-AZ fence line. Find lowest point in the wash along the fence line. This is also a route to the NV-UT-AZ tri-state corner which is about 3 miles due W of the UT low point.

NO. 26 WEST VIRGINIA

LOCATION: POTOMAC RIVER

ELEVATION: 240 FEET

ACCESS: Drive on US 340 from either west or east to the VA-WV line. The boundary was resurveyed in 2002 with markers placed near both edges of US 340. Park and climb down the bank from the highway to the river. There is no marker near the river so you will have to estimate where the state line comes down from the marker at the edge of the highway. See picture inside front cover. Low point coordinates are: 39° 19' 16.8" N, 77° 43' 10.1" W.

NO. 27 WYOMING

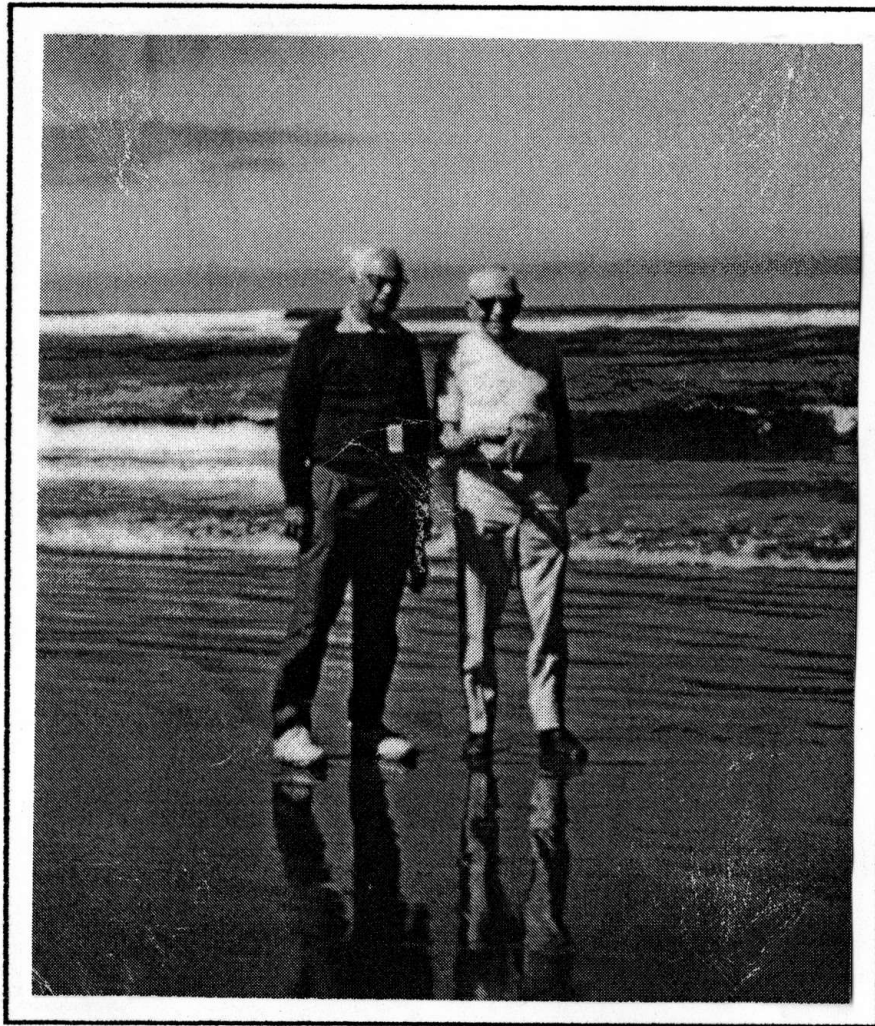
LOCATION: BELLE FOURCHE RIVER

ELEVATION: 3099 FEET

ACCESS: Just N of Belle Fourche, SD follow a mine road which runs parallel to US 212 but closer to the river. Follow this road to the WY line. Then hike S along the SD-WY line fence. This is ranch land in both states so cattle will probably be present. It's a good idea to get permission to be on the property. We ran into the ranch owner on the SD side, and he allowed us to proceed. Follow the fence until it ends short of the river. Take a bearing along the same line as the fence and continue to the river. This will bring you as close as possible to the WY low point. There is no marker on the river bank.

This low point may also be accessed from the S side of the river but we did not investigate that route.

THE END



Clark Hall and Jack Parsell at the final low point for Jack at Seaside, Oregon.

COASTAL AND LAKES

LOW POINTS

ATLANTIC OCEAN

CONNECTICUT

DELAWARE

FLORIDA

GEORGIA

MAINE

MARYLAND

MASSACHUSETTS

NEW HAMPSHIRE

NEW JERSEY

NEW YORK

NORTH CAROLINA

RHODE ISLAND

SOUTH CAROLINA

VIRGINIA

PACIFIC OCEAN

HAWAII

OREGON

WASHINGTON

GULF OF MEXICO

ALABAMA

MISSISSIPPI

TEXAS

LAKES

MICHIGAN

MINNESOTA

VERMONT

WISCONSIN